

NEO Dome Light IDD-KH

DC 24V products available

Power LED



Super-high luminance dome light !
Large sized products are standardized,
which were not available in the conventional series.

By adopting large sized domes with a diameter up to 350 mm, it is applicable to an inspection of large sized works, for which the conventional small sized dome lights cannot be used. Moreover, by mounting power LEDs with super-high luminance, the light can be installed at a sufficient distance from a work.

Unit: mm

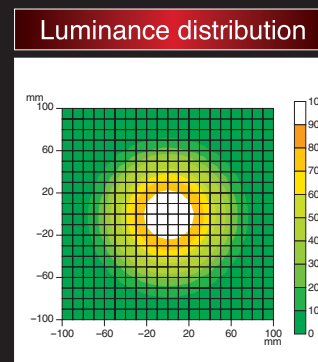
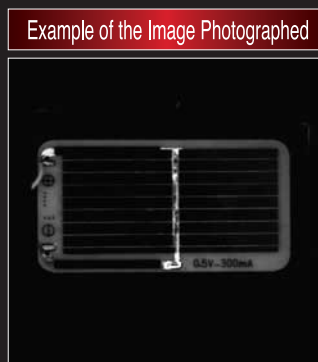
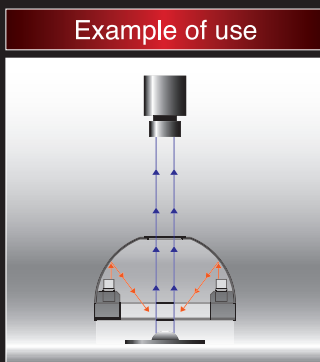
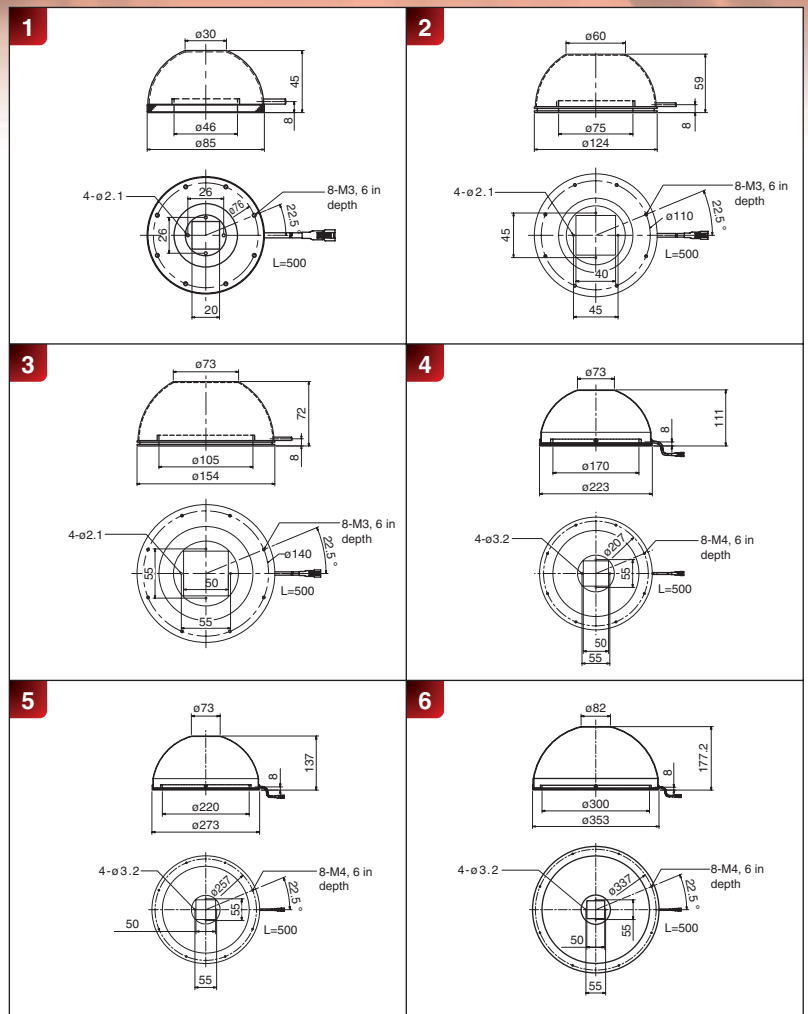
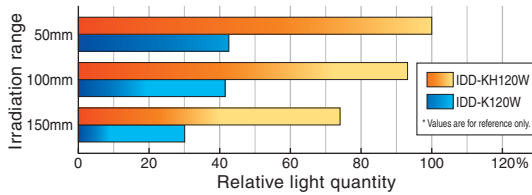
Model (12V)	Irradiating color	Number of LEDs	Power Consumption (W)	SAG (°)	Outline drawing	Model (24V)
IDD-KH80	R	18	7.2	FF	1	IDD-KH80 HV
	W			C4		
	B			AE		
	G			9D		
IDD-KH120	R	24	9.6	FF	2	IDD-KH120 HV
	W			C5		
	B			AF		
	G			9E		
IDD-KH150	R	36	14.4	FF	3	IDD-KH150 HV
	W			C8		
	B			B1		
	G			A0		
IDD-KH220	R	60	24	FF	4	IDD-KH220 HV
	W			CE		
	B			B5		
	G			A5		
IDD-KH270	R	72	28.8	DE	5	IDD-KH270 HV
	W			B9		
	B			B8		
	G			A7		
IDD-KH350	R	90	36	BD	6	IDD-KH350 HV
	W			A4		
	B			AA		
	G			9D		

represents R = red, W = white, B = blue, or G = green.

Number of LEDs, power consumption, SAG value, and outline drawing are for DC12V products. Please contact us for specifications of DC24V products.

* SAG represents the maximum SAG setting value. For details, refer to page 54.

Comparison with conventional products



Any work pattern can be recognized clearly by limiting reflection on the surface.

Work: Solar battery panel
Light: IDD-KH150W

It can irradiate uniformly overall at a close distance.

Measurement model: IDD-KH150W
WD: 10 mm