

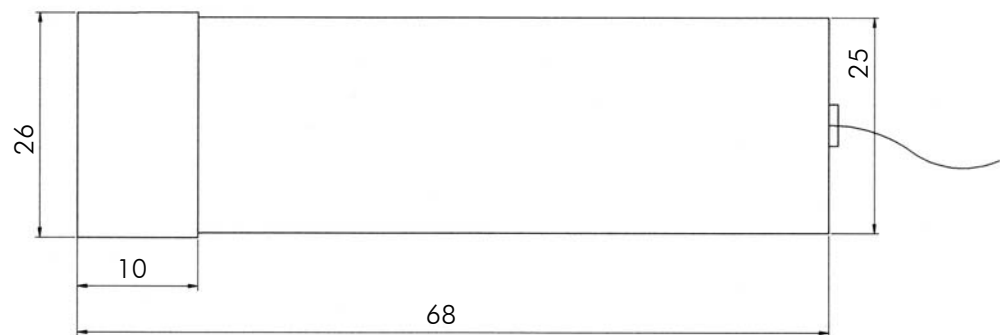
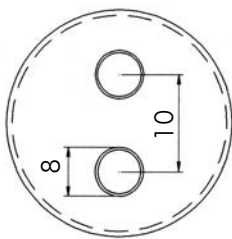
FLEXPOINT® Cross Hair Laser

APPLICATIONS

- Measurement technology (illumination for light-slit method)
- Machine manufacturing industry (for display cutting edges)
- Medical systems (for positioning patients)

FEATURES

- High optical performance
- Fan angles from 10° – 100°
- Laser can be optimized to working distance
- Ruggedized housing



All dimensions in mm

TECHNICAL DATA

Wavelength	635 nm – 905 nm
Optical power	depends on Laser diode type 1 ... 5 mW
Optics	line projection
Fan angle	10° - 100°
Input voltage	4,5 – 6 VDC; option 8 – 30 VDC reverse voltage protection
Power consumption	60 – 150 mA
Operating temperature range	0 – 40 °C typ.
Storage temperature range	-10 ... +60 °C
Specials	on request

09/06 / V1 / IF / blau / fp_kreuzlaser_e.doc

