



### Triple Play Measurement

- Temperature
- Voltage
- Resistance



*Easily expand channel count by adding TEMPpoint instruments to your test fixture.*



*Rugged enclosures optionally available.*

## Ultra-Accurate . . . By Design

# Applications



## Automotive

- Drive solid-state relays from  $\pm 30V$  @ 400mA (AC or DC)
- Expand channel count by adding TEMPpoint instruments
- Rugged steel enclosure for harsh environments
- Ultra-high accuracy measurements – A/D and CJC per channel



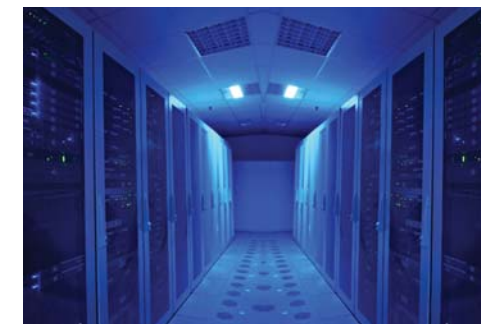
## Manufacturing/Aerospace

- Rugged rack-mount enclosure
- Ultimate in signal protection – 1,000V galvanic isolation
- “Anytime” calibration for guaranteed accuracy
- Quick wiring with easy-access jacks for thermocouples; screw terminals for RTDs



## Energy

- Dedicated 24-bit Delta Sigma A/D per channel for high accuracy measurements
- Precision voltage measurements to 1 part in 16 million
- Set alarm limits for instant notification
- “Anytime” calibration for guaranteed accuracy



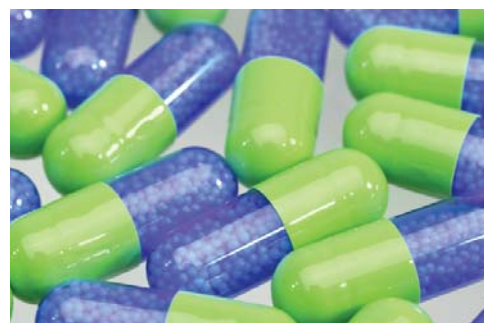
## Environmental Control

- Up to 48 channels with dedicated A/D and CJC per channel
- Measure temperature or humidity
- Monitor and control measurements remotely with web-based application
- Unattended operation – set alarm limits and get e-mail notification



## Remote Monitoring

- Ethernet (LXI) compatible instrument
- Monitor and control measurement from anywhere with web-based application
- Unattended operation – set alarm limits and get e-mail notification
- Use in a network or stand-alone



## Pharmaceutical/Biotech

- Application software to meet traceability standards
- High precision measurements with 24-bit Delta-Sigma A/Ds
- Galvanic isolation to protect signal integrity – 1,000V channel-to-channel
- Rugged and portable, remote monitoring and control



## Calibration

- Measurement repeatability for exacting needs
- AMS2750D compliant
- Dedicated A/D and CJC per channel for ultra-high accuracy readings
- Galvanic isolation to protect signal integrity – 1,000V channel-to-channel



## Food/Beverage

- Mobile measurement capability for diverse use in transport and location
- High precision measurements with 24-bit Delta-Sigma A/Ds per channel
- Expand channel count by adding TEMPpoint instruments
- Ultimate in signal protection – 1,000V galvanic isolation



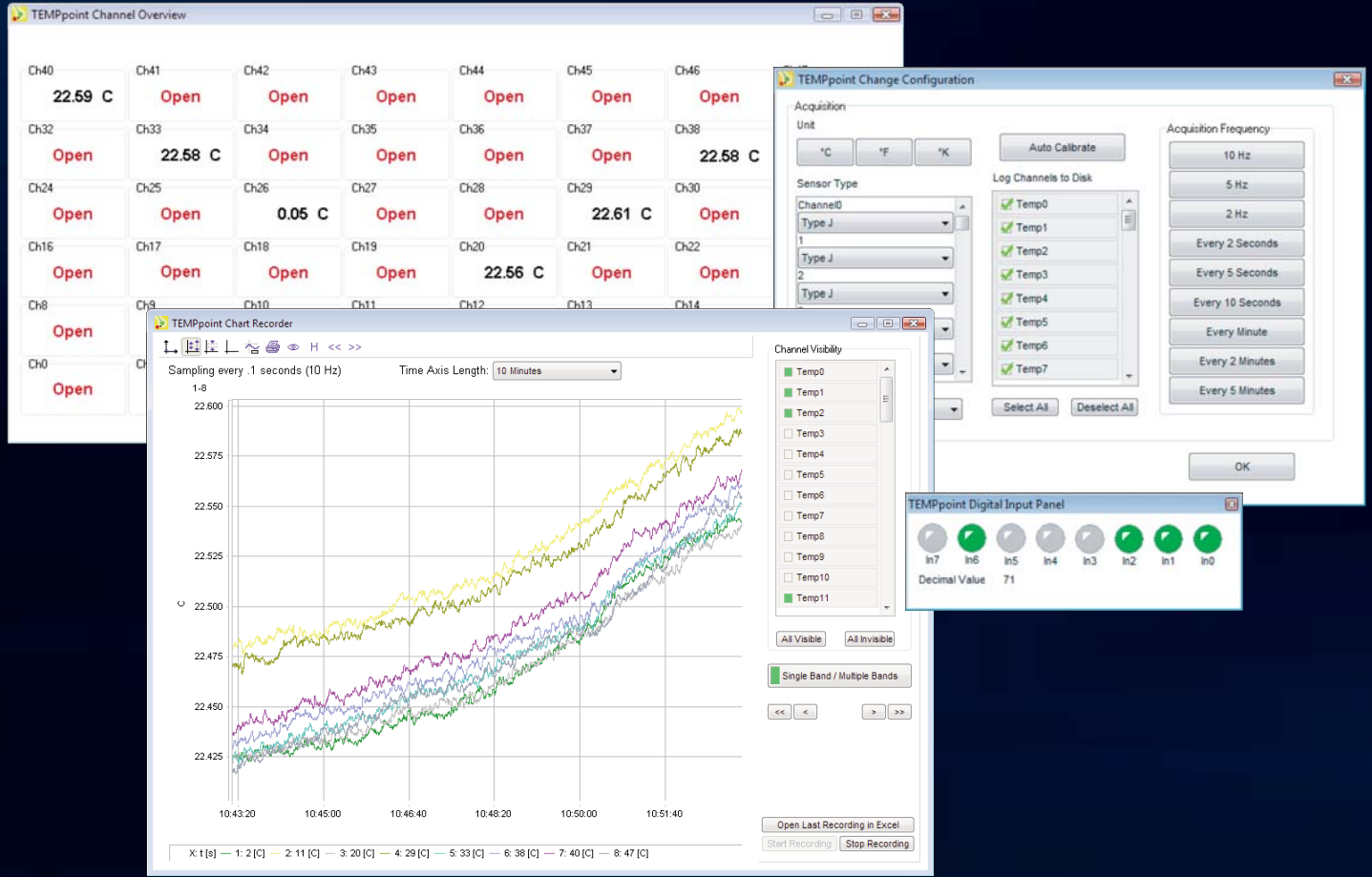
# Benefits

## Fast Start-Up of Applications

- Minimum warm-up and stabilization time
- Easily expand channel count simply by adding TEMPpoint instruments
- Quick wiring with easy-access jacks for thermocouples & voltages; screw terminals for RTDs & voltages
- Automatic linearization of all measurements

## Confident Results

- Eliminates ground loops and channel interaction with individual isolated, floating front end for each of 48 channels
- Galvanic isolation to protect signal integrity – 1,000V channel-to-channel
- Field calibration... Easily accomplished
- Rugged steel enclosure for harsh environments



## Investment Protection

- Software application for any measurement need
- Reconfigurable to changing requirements – add channels as needed
- Multiple instrument expansion to thousands of channels
- Full compatibility to standards-based instruments: USB or Ethernet, use in a network or stand-alone

## Ready-To-Use

- No programming necessary... simply connect inputs and measure
- Monitor and control measurements from anywhere over the Web
- Measurement repeatability for exacting needs
- Unattended operation – set alarm limits and get e-mail notification

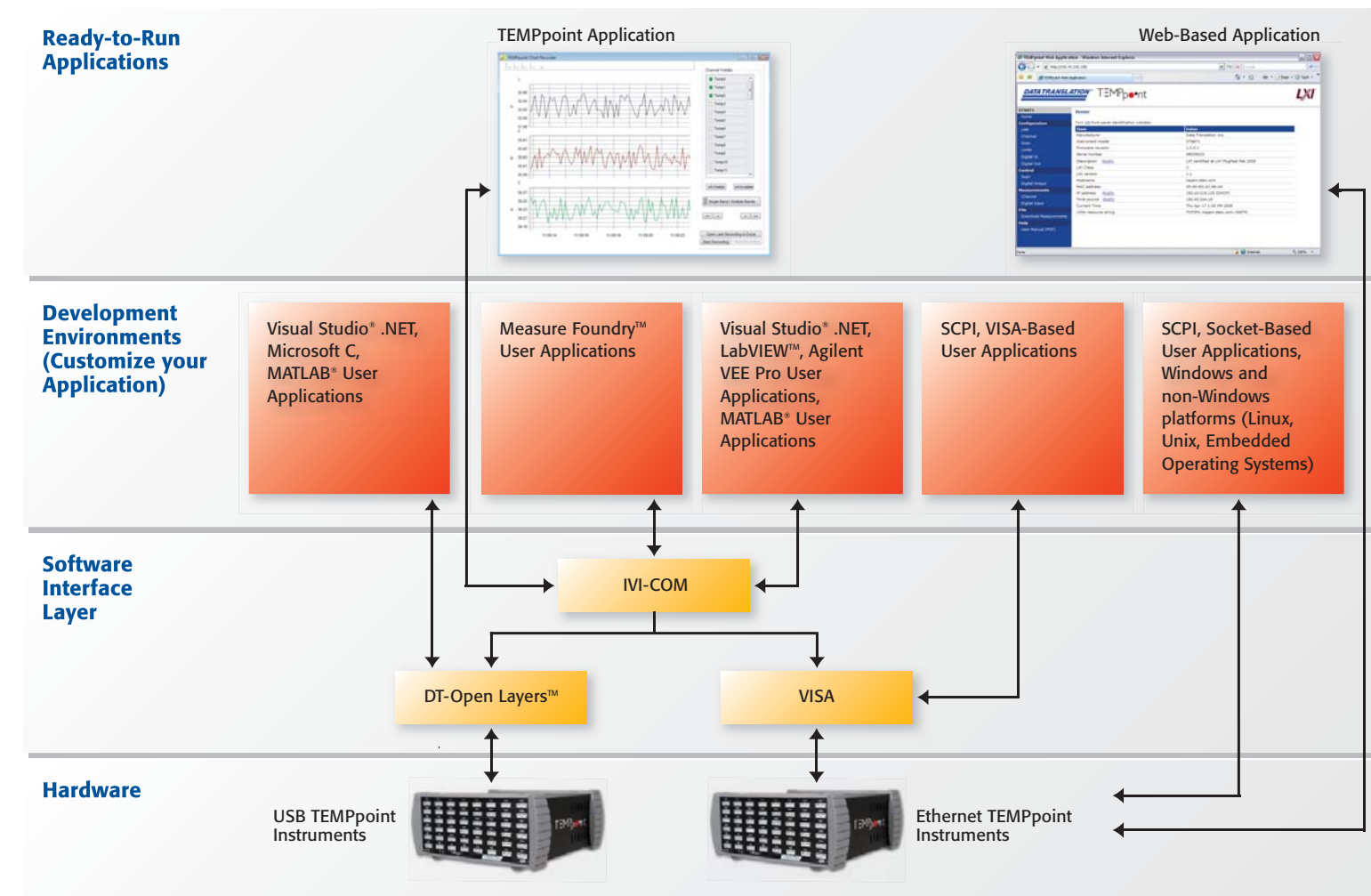
## TEMPpoint Ordering Options

Model	Sensor Type	# of Channels	Interface
DT9871U	Thermocouple, Voltage	Available in 8, 16, 24, 32, 40, or 48	USB
DT9872	RTD, Voltage, Resistance		
DT8871U	Thermocouple, Voltage		Ethernet (LXI)
DT8872	RTD, Voltage, Resistance		

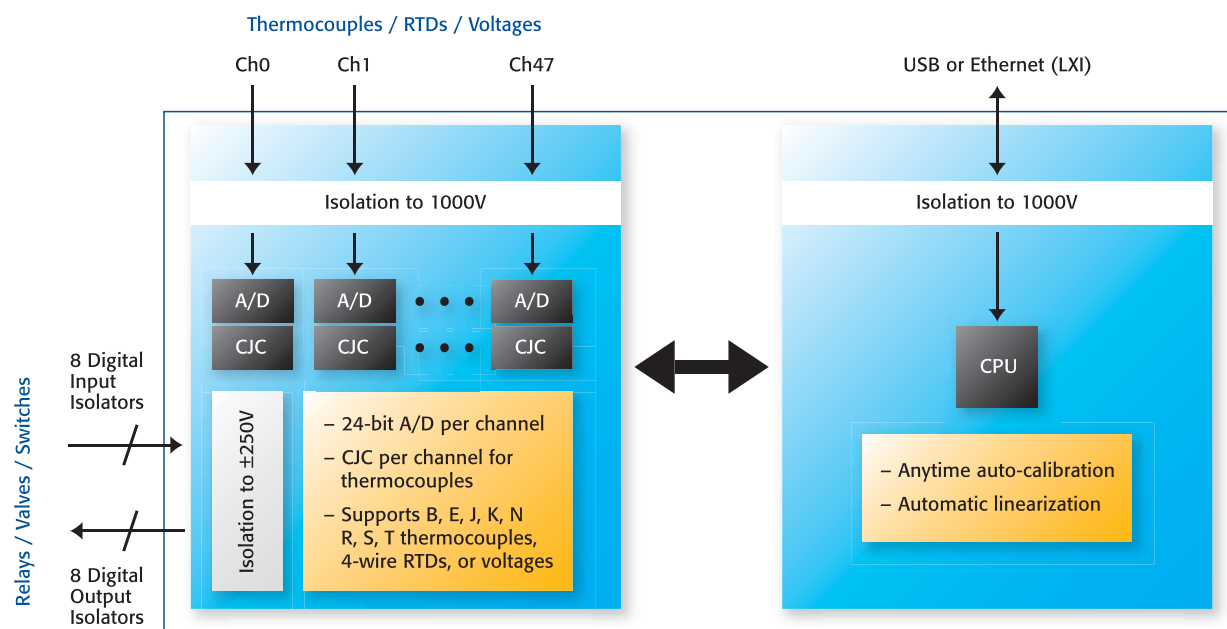


TEMPpoint can be configured with up to 48 channels of thermocouple, RTD, resistance, or voltage inputs and ships with a ready-to-run application.

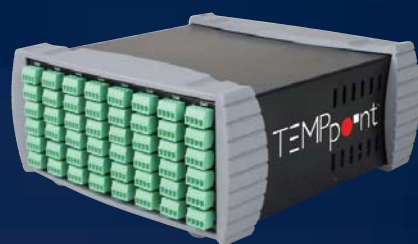
## Many Software Options to Suit Your Needs



Many software choices are available for accessing the power of your TEMPpoint instrument. For quick start up right out of the box, use the ready-to-measure TEMPpoint application or the instrument's web-based application (for Ethernet versions) to measure and display temperature data from up to 48 channels. Or, if you want to develop your own application, choose the development environment that suit your needs. Development capability is provided at different levels and on different platforms to meet your application requirements – from SCPI-based programming to full graphical programming with Measure Foundry®.



Each TEMPpoint is a stand-alone instrument with up to 48 channels. It features a dedicated A/D and CJC on each 24-bit input and can accept thermocouple, voltage, or RTD signals.

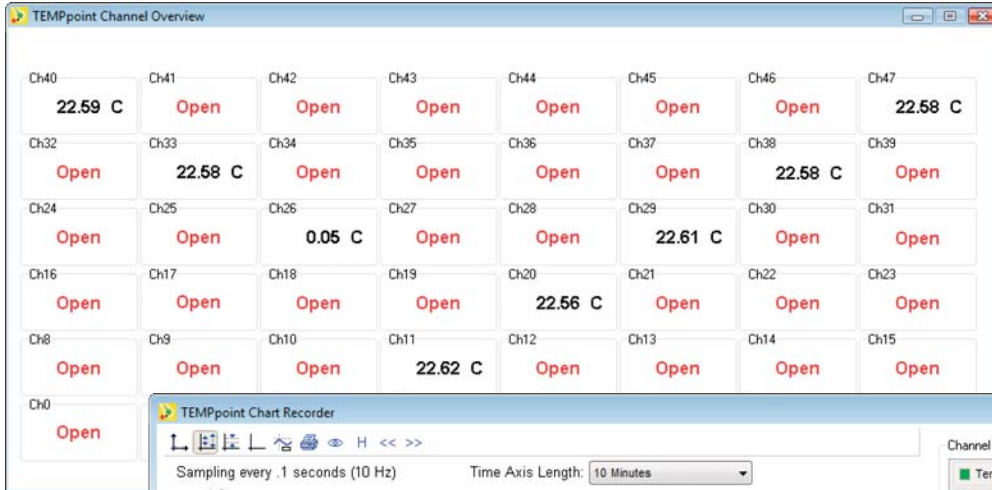


- Compact, Rugged Enclosure
- 2U, half-rack
- 3.5" H x 8.25" W x 8.25" L

Measure Locally or Remotely using Ethernet or USB



# TEMPpoint Application



## 1 Acquire

Set the channel type, high and low alarm limits, for up to 48 input channels. Digitally display input and CJC data; alarm conditions are shown in red.



## 2 Display

Record data from up to 48 channels to an HPF file and display the data on a single band or on multiple bands.

## Capability That Fits Each Application Need

You can be productive right out of the box without writing any code. TEMPpoint ships with a ready-to-measure application for measuring temperature data. Developed using Measure Foundry, this application allows you to acquire temperature measurements from up to 48 channels, display the data, and log the data to disk. Because source code is provided, you can customize the application to suit your needs using Measure Foundry.



100 LOCKE DRIVE  
MARLBORO, MA 01752-1192 USA

US/CANADA 800-525-8528  
WWW.DATATRANSLATION.COM

EUROPE/ASIA +49 (0) 7142-9531-0  
WWW.DATATRANSLATION.EU