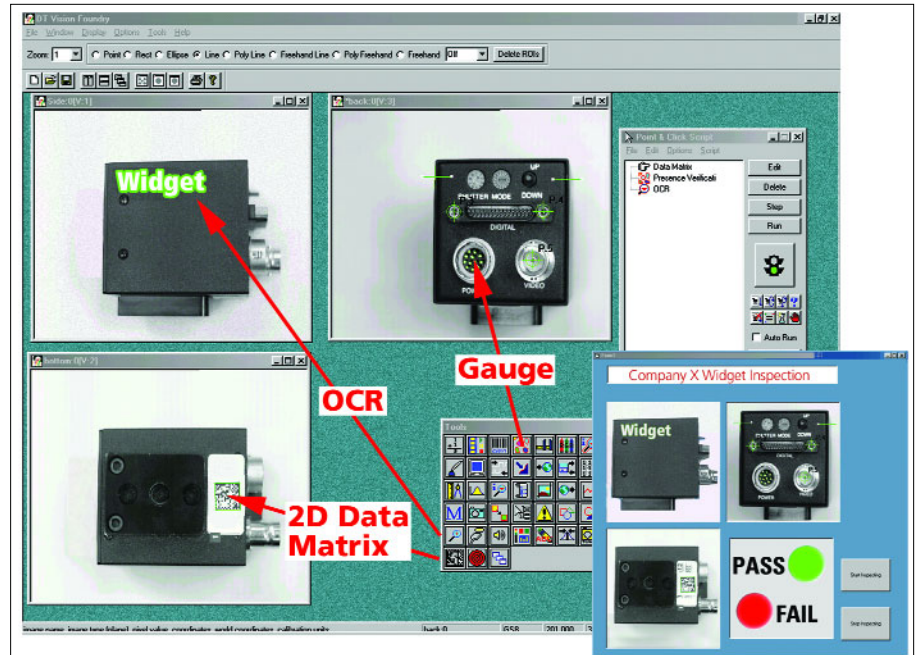


Imaging OMNI CD

Valuable Software Bundle with DT PCI Frame Grabbers

Key Features

- **DT Vision Foundry 3.5 Evaluation Software:** DT Vision Foundry is a versatile and extensible machine vision software package that integrates powerful vision tools with multiple programming environments to provide a robust, flexible, easy-to-use visual inspection package. DT Vision Foundry is supported under Windows 2000/XP. The Imaging Omni CD lets you evaluate the great new features of DT Vision Foundry for 14 days.
- **Device Drivers:** Device Drivers are provided for MACH I Series (DT3120, DT3130, DT3152, DT3152-LS, DT3153, DT3154, DT3155, DT3157) and MACH II Series (DT3162) PCI boards under Windows 2000 and XP.
- **Frame Grabber SDK:** Provided for MACH I Series boards, the Frame Grabber SDK allows Microsoft C programmers to develop their own application software in Windows 2000 or XP.24 MB RAM.
- **DT-Active Monochrome Frame Grabber Control:** Provided for the DT3162, this easy-to-use control allows Microsoft Visual Basic and Visual C++ programmers to develop their own application software for in Windows 2000 or XP.
- **DT-Acquire and DT-Acquire2:** DT-Acquire is provided for MACH I Series boards; DT-Acquire2 is provided for the DT3162. These menu-driven, ready-to-run applications let you verify the operation of your frame grabber boards, including acquiring an image, opening a previously saved bitmap image, and saving an acquired image in bitmap format.
- **Documentation for all Data Translation PCI frame grabbers.**



The Imaging Omni CD lets you evaluate DT Vision Foundry.

Overview

The Imaging Omni CD provides you with the tools you need to set up your Data Translation frame grabber, to develop vision imaging applications, and to integrate your frame grabber into your existing application. The Imaging Omni CD is included free with the purchase of any Data Translation PCI frame grabber.

Ready-to-Run Imaging Application

DT-Acquire 3.0 is a menu-driven, ready-to-run software application that allows you to acquire, load and save images using your Data Translation PCI frame grabber. Using DT-Acquire, you can verify the proper operation of your board by acquiring a single frame or acquiring and displaying live video.

Development Tools

Provided for MACH I Series boards, the Frame Grabber SDK allows C and C++ programmers to develop applications. The Frame Grabber SDK consists of hard-

ware-independent and device-specific DLLs that enable you to easily integrate Data Translation frame grabbers into your application. Frame grabber functions include image acquisition, memory management, frame grabber input control, and image display and overlay control.

PCI Frame Grabber Device Drivers

Device drivers for all Data Translation PCI imaging boards are included on the Imaging Omni CD. DT-Open Layers, a set of standards for developing integrated, modular application programs under Windows, allows you to easily migrate from one Data Translation frame grabber to another with little or no changes in your code. For the most up-to-date device drivers, visit our website at www.datatranslation.com.

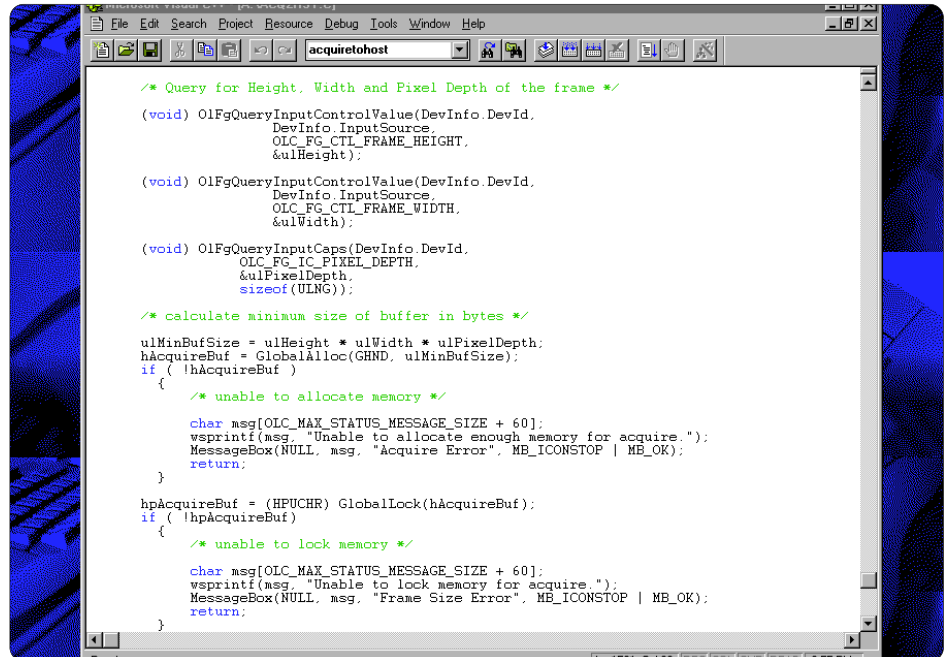
Example Programs

Executable program examples with source code include the Acquire to Host example program which illustrates the required programming sequence when using Frame Grabber SDK standard functions, and the Passthru example program which illustrates the use of the passthru functions, the supporting Windows® functions, and associated Windows resources such as palettes, bitmaps, and scrollbars.

Frame Grabber SDK™ Software Kit

Key Features

- Complete DLLs (dynamic link libraries) of hardware-independent and extension function calls.
- Enables C and C++ programmers to control the operations of Data Translation MACH I Series frame grabbers.
- DT-Open Layers™ architecture allows for easy upgrading to MACH I Series Data Translation PCI frame grabber with little or no reprogramming.



The Frame Grabber SDK lets you easily implement DT MACH I Series frame grabbers into your custom application.

Overview

The Frame Grabber SDK contains a complete set of general imaging functions, as well as functions for memory allocation, input control, digital I/O, passthru, display, and overlays. Even capabilities unique to a particular frame grabber are fully supported in device-specific libraries. Once you create an application using the Frame Grabber SDK, you can update or upgrade to any other supported frame grabber with little or no reprogramming.

Frame Grabber SDK Functions

Frame Grabber SDK standard functions are a core group of common functions that allow you to perform standard operations. You can use these functions with all or most frame grabber boards. The standard functions include:

- General Imaging functions
- Input Control functions
- Output Control functions
- Memory Allocation functions

- Passthru functions
- Overlay functions
- Acquisition functions
- Display functions
- Image Processing functions
- Digital I/O functions
- Line-scan functions

32-Bit Support for Windows 2000/XP

Specifically designed for 32-bit support, the Frame Grabber SDK lets you get full performance under Windows 2000/XP. The 32-bit design means faster access to video data, reducing the overhead associated with image processing operations.

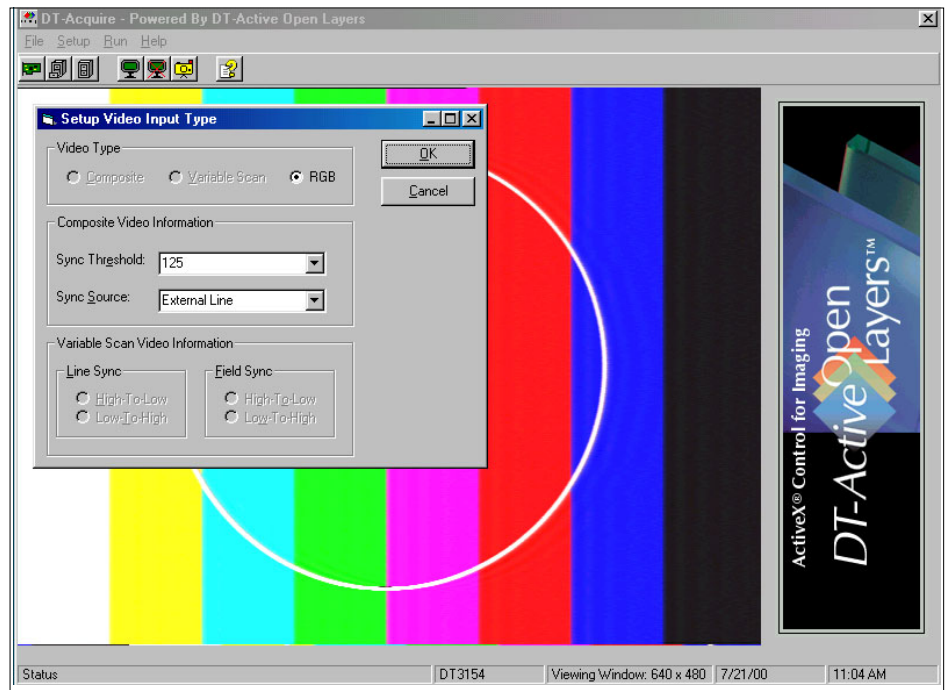
Object-Oriented Design

The Application Programming Interface (API) of the Frame Grabber SDK emphasizes polymorphism for easier programming. Complex commands have been simplified into a set of function calls for ease of use.

DT-Acquire 3.0 Menu-driven Application for Image Capture

Key Features

- Perform “passthru” (continuous display) and single frame image acquisition operations.
- Control key frame grabber settings and parameters.
- Supports all Data Translation PCI frame grabbers.
- Built with DT-Active Open Layers™ technology, Data Translation’s ActiveX® control for PCI frame grabbers, and Visual Basic®.
- Source code for DT-Acquire available with the purchase of DT-Active Open Layers, so you can make the custom modifications you require.



DT-Acquire lets you fully control parameters of your DT PCI frame grabber.

Overview

DT-Acquire is a menu-driven, ready-to-run software application that allows you to acquire images using your Data Translation PCI frame grabber. You can verify the proper operation of your board by displaying your image on the screen or saving it to disk with DT-Acquire.

Easily Acquire Images Right Away

Using DT-Acquire, you can immediately begin acquiring images without any complicated set-up.

Choose Your Image Acquire Options

DT-Acquire offers you full control of parameters, including:

- Camera type
- Color image
- Input source
- Video input type
- Frame type
- Sync sentinel
- Pixel clock
- Active video area

- Frame size
- Sync master

If you prefer, rather than manually setting parameters one at a time, you can load the camera/signal file for the specific input source and it will automatically set up all the right parameters.

New Features

The latest version of DT-Acquire features an easy-to-use tool bar, control for up to eight digital input/output lines (as supported by individual frame grabber models), and an external trigger. It also includes online help.

Data Saving

You can open and save bitmap image files, then easily manipulate those files with your third-party software.

DT-Acquire Protects Your Software Investment

DT-Acquire is based on Data Translation’s open standard DT-Open Layers software architecture. This standard ensures future compatibility because it provides a common driver structure among all Data

Imaging OMNI CD

OS: Windows 2000/XP

Type: Free Software Bundle

System Requirements

- IBM-compatible processor, Pentium® class, 133 MHz or faster (Pentium II recommended) with a Triton PCI chipset or better and supporting system BIOS.
 - Microsoft Windows 2000/XP
 - 24 MB RAM
 - PCI interface slot(s) for frame grabber support
 - Data Translation PCI frame grabber (see list of supported frame grabbers below)
 - CD-ROM drive
 - DDI-compatible graphics adapter
- #### Supported Data Translation frame grabbers
- DT3152 high-accuracy variable-scan monochrome PCI frame grabber
 - DT3153 low-cost composite color and S-video PCI frame grabber
 - DT3154 RGB color PCI frame grabber
 - DT3155 industrial-accuracy monochrome PCI frame grabber
 - DT3157 single/dual channel, 8- to 16-bit monochrome PCI interface for digital cameras
 - DT3131 composite/S-video monochrome and color, single PCI frame grabber
 - DT3132 composite/S-video monochrome and color, double PCI frame grabber
 - DT3133 composite/S-video monochrome and color, triple PCI frame grabber
 - DT3120 low-cost single-channel composite monochrome and color PCI frame grabber
 - DT3162 high-speed variable-scan monochrome PCI frame grabber

© Copyright 2003 Data Translation, Inc. All rights reserved.
All trademarks are the property of their respective holders.
Prices and specifications subject to change without notice. 16217-3

Translation PCI frame grabbers. This enables you to migrate to a new frame grabber, or add additional frame grabbers, without reprogramming.

Example Programs

Acquire to Host Example Program

The Acquire to Host example program illustrates the required programming sequence when using Frame Grabber SDK standard functions. It shows you how to perform queries and then enable/disable user options and/or change input controls based on the supported input capabilities of the frame grabber board (indicated by the query responses). The program then acquires data to host memory and displays the data as a Device-Independent Bitmap (DIB) in the client area of the application.

Passthru Example Program

The Passthru example program illustrates the use of the passthru functions, the supporting Windows functions, and associated Windows resources such as palettes, bitmaps, and scrollbars. It allows you to open a device, select synchronous or asynchronous passthru, and run the passthru operation. scrollbars.

Documentation

Manuals, specification sheets, and complete documentation for all Data Translation PCI frame grabbers are also included.

DT-Acquire Source Code

The source code for DT-Acquire ships with the purchase of DT-Active Open Layers. With the source code and Microsoft Visual Basic, you will be able to make custom modifications to the pro-

gram. When you have developed custom modifications, you can e-mail or download the application back to us to share with the user community. A library of user-modified versions will be available on the Data Translation Web site.

Technical Support

As you develop your application, technical support is available when you need it. Extensive information is available 24 hours a day on our web site at www.datatranslation.com, including drivers, example code, bug fixes, pinouts, a searchable KnowledgeBase, and much more.

Obtaining the Imaging Omni CD

The Imaging Omni CD ships free with the purchase of any Data Translation PCI frame grabber board, or you can download it free from the Web site at www.datatranslation.com.